

# Re-Si (Rhenium-Silicon)

H. Okamoto

The Re-Si phase diagram in [Massalski2] was redrawn from [1996Gok] (dashed line in Fig. 1). This system was thermodynamically assessed by [2001Sha]. The calculated phase diagram is shown in two figures in [2001Sha]. They mismatch about 50 °C on the Si side. The one in better agreement with the established melting point of Si is shown in Fig. 1 with solid lines. Naturally, the calculated phase diagram is thermodynamically self-consistent, for example,

the symmetry of  $\text{ReSi}_{1.8}$ , but it must be confirmed due to the problem described previously.

## References

- 1996Gok:** A.B. Gokhale and R. Abbaschian, The Re-Si System (Rhenium-Silicon), *J. Phase Equilibria*, 1996, **17**(5), p 451-454  
**2001Sha:** G. Shao, Thermodynamic Analysis of the Re-Si System, *Intermetallics*, 2001, **9**(12), p 1063-1068

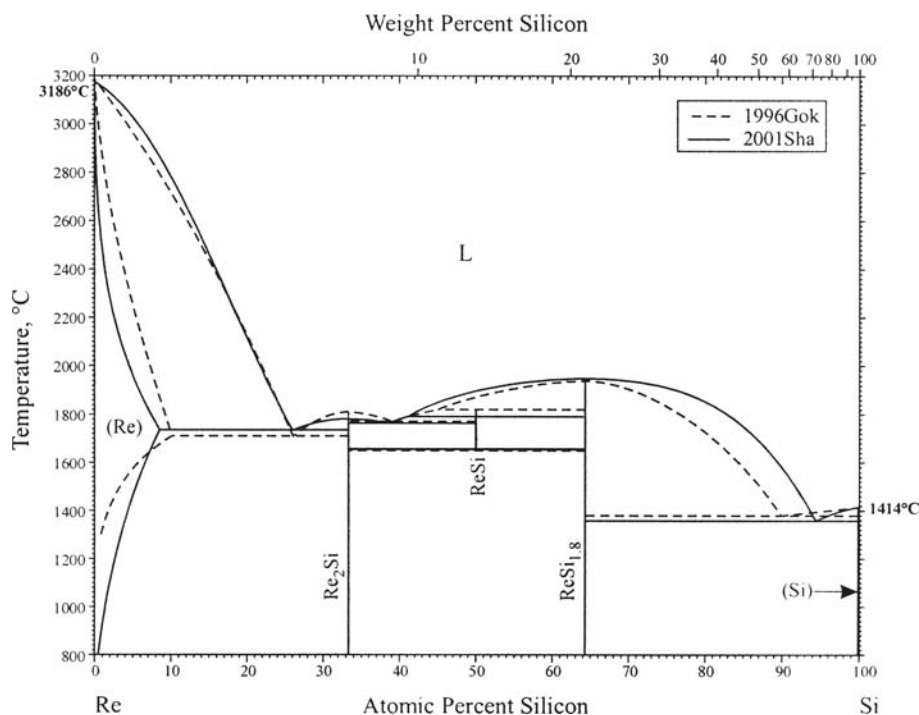


Fig. 1 ReSi phase diagram